

THE CHICKEN LEG PROCESSOR

The machine that started the revolution in chicken cut-up; FoodCraft's Chicken Leg Processor Model LP-1 and Chicken Leg Processor with Splitter Model LP-1 w/LS-1 continue to be the preferred method of mechanically cutting the Back Half or Saddle today.

Utilizing one operator to load the machine at a rate of up to 35 birds per minute, the FoodCraft Leg Processor is designed to separate the legs and thighs from the back.

First the saddle is scored, then the leg is pulled from the back which causes the oyster to remain with the thigh portion. This process re-

sults in improved yield over any other method.

Supplied as an option, the thigh and drum splitter enables the processor to automatically split the thigh from the drum without any additional labor and without sacrificing quality or yield.

Each machine is hydraulically powered and requires a 110V control circuit. Stainless Steel and UHMW are used throughout the construction to give the ultimate in appearance and satisfy the most stringent sanitary requirements.

Engineered and designed to maximize yield and minimize labor and maintenance cost and backed by FoodCraft craftsmen and service representatives dedicated to only the best, the FoodCraft Chicken Leg Processor and/or Leg Processor with Splitter is the machine for your processing plant.

Investigate FoodCraft's complete line of chicken cut-up, and deboning equipment. Contact your nearest FoodCraft distributor, or FAX us at (717) 656-0549, for a brochure and more information.



Manufacturers of FoodCraft Further Processing and



Primary Processing
Equipment

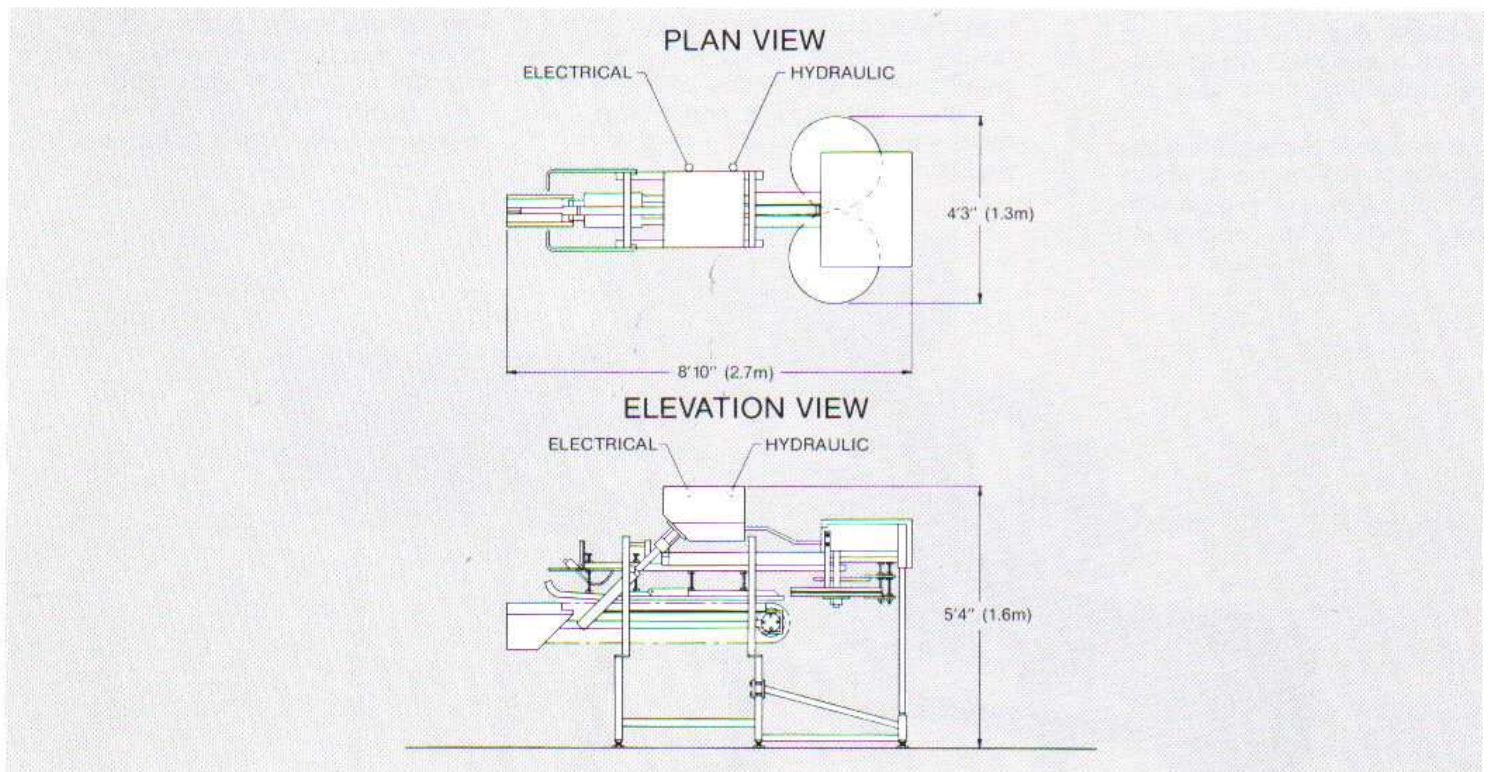


the better way

Specifications

MODEL	LP-1 W/LS-1	
LENGTH	8'10"	2.7 m
WIDTH	4'3"	1.3 m
HEIGHT	5'4"	1.6 m
ELECTRIC	120 Volts/60 HZ CONTROL CIRCUIT	
HYDRAULIC*	8 GPM @ 1300 PSI	
SHIPPING WEIGHT (NET)	1125 lbs.	510 kg
SHIPPING WEIGHT (GROSS)	1200 lbs.	544 kg
CUBE	300 cu. ft.	8.5 m ³

*A Central Hydraulic System is required.
Leg Processor also available without Leg Splitter.



If you need replacement parts, FoodCraft carries a complete stock of parts and components for every FoodCraft and Barker machine we manufacture.



the better way

FoodCraft Equipment Co., Inc.
53 Industrial Circle, Lancaster, PA 17601 • FAX 717-656-0549

Manufacturers of FoodCraft Further Processing and



Primary Processing Equipment